

Installing CosmosScope

Version A-2007.12, December 2007

SYNOPSYS®

Copyright Notice and Proprietary Information

Copyright © 2007 Synopsys, Inc. All rights reserved. This software and documentation contain confidential and proprietary information that is the property of Synopsys, Inc. The software and documentation are furnished under a license agreement and may be used or copied only in accordance with the terms of the license agreement. No part of the software and documentation may be reproduced, transmitted, or translated, in any form or by any means, electronic, mechanical, manual, optical, or otherwise, without prior written permission of Synopsys, Inc., or as expressly provided by the license agreement.

Right to Copy Documentation

The license agreement with Synopsys permits licensee to make copies of the documentation for its internal use only. Each copy shall include all copyrights, trademarks, service marks, and proprietary rights notices, if any. Licensee must assign sequential numbers to all copies. These copies shall contain the following legend on the cover page:

“This document is duplicated with the permission of Synopsys, Inc., for the exclusive use of _____ and its employees. This is copy number _____.”

Destination Control Statement

All technical data contained in this publication is subject to the export control laws of the United States of America. Disclosure to nationals of other countries contrary to United States law is prohibited. It is the reader's responsibility to determine the applicable regulations and to comply with them.

Disclaimer

SYNOPSIS, INC., AND ITS LICENSORS MAKE NO WARRANTY OF ANY KIND, EXPRESS OR IMPLIED, WITH REGARD TO THIS MATERIAL, INCLUDING, BUT NOT LIMITED TO, THE IMPLIED WARRANTIES OF MERCHANTABILITY AND FITNESS FOR A PARTICULAR PURPOSE.

Registered Trademarks (®)

Synopsys, AMPS, Cadabra, CATS, CRITIC, CSim, Design Compiler, DesignPower, DesignWare, EPIC, Formality, HSIM, HSPICE, iN-Phase, in-Sync, Leda, MAST, ModelTools, NanoSim, OpenVera, PathMill, Photolynx, Physical Compiler, PrimeTime, SiVL, SNUG, SolvNet, System Compiler, TetraMAX, VCS, Vera, and YIELDirector are registered trademarks of Synopsys, Inc.

Trademarks (™)

AFGen, Apollo, Astro, Astro-Rail, Astro-Xtalk, Aurora, AvanWaves, Columbia, Columbia-CE, Cosmos, CosmosEnterprise, CosmosLE, CosmosScope, CosmosSE, DC Expert, DC Professional, DC Ultra, Design Analyzer, Design Vision, DesignerHDL, Direct Silicon Access, Discovery, Encore, Galaxy, HANEX, HDL Compiler, Hercules, Hierarchical Optimization Technology, HSIM^{plus}, HSPICE-Link, iN-Tandem, i-Virtual Stepper, Jupiter, Jupiter-DP, JupiterXT, JupiterXT-ASIC, Liberty, Libra-Passport, Library Compiler, Magellan, Mars, Mars-Xtalk, Milkyway, ModelSource, Module Compiler, Planet, Planet-PL, Polaris, Power Compiler, Raphael, Raphael-NES, Saturn, Scirocco, Scirocco-i, Star-RCXT, Star-SimXT, Taurus, TSUPREM-4, VCS Express, VCSi, VHDL Compiler, VirSim, and VMC are trademarks of Synopsys, Inc.

Service Marks (SM)

MAP-in, SVP Café, and TAP-in are service marks of Synopsys, Inc.

SystemC is a trademark of the Open SystemC Initiative and is used under license.

ARM and AMBA are registered trademarks of ARM Limited.

Saber is a registered trademark of SabreMark Limited Partnership and is used under license.

All other product or company names may be trademarks of their respective owners.

Printed in the U.S.A.

Installing CosmosScope, A-2007.12

Installing CosmosScope

This document describes how to install the CosmosScope product.

Note:

The installation instructions in this document are the most up-to-date available at the time of production. However, changes might have occurred. For the latest installation information, see the product release notes or documentation.

This document provides instructions for both UNIX and Windows platforms. The document includes the following sections:

- [Preparing for Installation](#)
- [Installing the Software \(UNIX and Windows\)](#)
- [Invoking CosmosScope on Windows](#)
- [Setting Up the User Environment on UNIX](#)
- [Verifying the CosmosScope Installation on UNIX](#)
- [Viewing and Printing CosmosScope Documentation in Portable Document Format](#)
- [Using Command Options](#)
- [Troubleshooting CosmosScope Startup on Windows](#)
- [Uninstalling the Software](#)
- [Customer Support](#)

Important:

Do not install a later version of the CosmosScope tools over an earlier version of the tools.

Preparing for Installation

Before beginning the installation process, read the *CosmosScope Release Notes*. The release notes are in Portable Document Format (PDF) and are located at the top level of the CD and in the electronic software transfer (EST) download directory. They require a PDF file reader to view and print them. Check for the following information:

- Changes in licensing requirements
- Changes in memory requirements
- The operating system versions on which the software is supported
- Changes made from prior releases

If you have not already done so, retrieve your license keys from the SmartKeys Web page at <http://solvnet.synopsys.com/smartkeys>

For detailed licensing information, see the Synopsys Licensing QuickStart Guide Web page at <http://www.synopsys.com/keys>

UNIX: You must have root or administration privileges when installing licensing or tools in a restricted directory location.

The installation script requires the Bourne shell to be available at `/bin/sh`.

Windows: Administration privileges are required for installing and uninstalling the tool. To ensure a successful installation, confirm that previous releases have been uninstalled (see *Installing Synopsys Tools*, available at <http://www.synopsys.com/install/>). If licensing will be installed with this installation, you must stop any existing license servers (Imgrd or avantd), then uninstall licensing. To stop the avantd FLEXIm license server or FLEXIm license server, choose Administrative Tools > Services from the Control Panel.

Supported Platforms and Compilers

CosmosScope is available on CD or by EST. Obtain the appropriate binary executable files for your operating system. Table 1 lists the supported platforms for this release.

Table 1 Supported Platforms, Operating Systems, and Keywords

Platform	Operating system	Synopsys platform keyword	Window environment
HP PA-RISC 2.0	HP-UX 11.0, 11.11 (11i) ¹	hp32 (32-bit mode)	CDE
Sun SPARC	Solaris 9 (32-bit and 64-bit, with shared library patch 111711-12 or later), Solaris 10 (32-bit)	sparcOS5	CDE
IBM	AIX 5.3	rs6000 (32-bit mode)	CDE
IA-32 (X86) AMD Opteron (64-bit)	Red Hat Enterprise Linux v3, 4 ¹ SUSE Enterprise Linux 9 ²	linux (32-bit mode) linux (64-bit mode) suse32 (32-bit mode) ²	GNOME
IA-32 (X86)	XP Professional v2002 ¹	winXP	
IA-32 (X86)	Windows 2000 SP3	win2000	

- 1. Binary-compatible operating system. Note, however, that binary compatibility is not guaranteed.*
- 2. The SUSE Enterprise Linux 32-bit software is binary compatible with the 32-bit (x86) Linux software. Note, however, that binary compatibility is not guaranteed.*

The CosmosScope tool works with the Solaris platform in combination with a FORTRAN, C, or C++ compiler. You will need one of these compilers if you are writing new readers with the CosmosScope external reader application programming interface (API).

Installing CosmosScope

Preparing for Installation

Table 2 shows the supported compilers for each operating system.

Table 2 Compatible Operating System Compilers

Operating system	C	C++	FORTRAN
HP 9000 PA-RISC 2.0 (HP 8000) using HP-UX 11 (32-bit)	B.11.11.04	A.03.33	B.11.01.42
IBM (RS/6000 AIX)	VisualAge 6.0	VisualAge 6.0	xlfcmp 8.1.1.4
Red Hat Linux (IA-32 or X86)	gcc 3.3.6	g++ 3.3.6	g77 3.36
Microsoft Windows 2000 (32-bit)	MS Visual .NET 2003	MS Visual .NET 2003	Intel Visual Fortran 9.0 with patch 24
Sun Solaris (SPARC)	5.5 (Sun Studio 8)	5.5 (Sun Studio 8)	5.5 (Sun Studio 8)

MATLAB Support

Table 3 shows the supported platforms and corresponding MATLAB version.

Table 3 MATLAB Version and Platform Support

Platforms	Default version	Other supported versions
HP-UX	6.1	5.2, 5.3, 6.5
Red Hat Linux	6.5	6.1
Sun Solaris (SPARC)	7.0 SP3	5.2, 5.3, 6.1, 6.5, 7.0, 7.0 SP1, 7.0 SP2, 2006a, 2006b
Windows	7.0 SP3	5.2, 5.3, 6.1, 6.5, 7.0, 7.0 SP1 7.0 SP2, 2006a, 2006b

MATLAB is not supported on the IBM platform.

If you need to link to a nondefault version of MATLAB, copy all files located in the *install_home/CosmosScope/bin/Matlab_version* directory to *install_home/CosmosScope/bin*.

Note:

For the most current MATLAB versions and platform support, see the INSTALL_README.wri file in the product download directory.

Disk Space and Memory Requirements

The disk space requirement varies depending on the platform and the features selected for installation. Table 4 shows the maximum space required for installing all CosmosScope features on a particular platform. Each CD also includes this information in the top-level INSTALL_README.wri file.

Table 4 Disk Space and Memory Requirements (in Megabytes)

Platform	Software (maximum)	Default temporary directory location	Temporary disk space from CD	Temporary disk space from EST
HP-UX	200	/var/tmp	120	150
Solaris	190	/var/tmp	100	130
Linux	150	/tmp	70	100
Windows	120	%TEMP% or C:\My Documents\temp	40	85
IBM	120	/var/tmp	60	100

If the default temporary directory has insufficient disk space, use the `-is:tempdir /mytempdir` command-line option to use an alternative directory for temporary storage. For example, for UNIX platforms,

```
% setup -is:tempdir ~/tmp
```

or

```
% CosmosScope_version_platform.bin -is:tempdir ~/tmp
```

Installing the Software (UNIX and Windows)

You can install CosmosScope version Z-2007.03 by using a GUI or by using text commands. By default, the CosmosScope installer invokes the installation

Installing CosmosScope

Installing the Software (UNIX and Windows)

GUI. To install CosmosScope by using text commands, see [Installing Synopsys Tools](#).

Installing the Software by EST

Download the CosmosScope release to a temporary directory. You can obtain the latest CosmosScope download instructions from the SolvNet Release Library.

To install the software on UNIX systems,

1. Double-click the downloaded file, or enter the file name at the command prompt. For example,

```
% CosmosScope_version_platform.bin
```

where *version* is the release you are installing. Replace *platform* with the appropriate platform keyword (see [Table 1 on page 5](#)).

2. Continue with the steps in [Installing Synopsys Tools](#).

To install the software on Windows systems,

1. Locate and double-click the .exe file. For example, double-click

```
CosmosScope_version_win.exe
```

where *version* is the release you are installing.

2. Continue with the steps in [Installing Synopsys Tools](#).

Installing the Software From a CD

Mounting the CD might require root access privileges. If you do not have root access privileges, see your system administrator for instructions on mounting the CD. For detailed instructions, see [Installing Synopsys Tools](#).

To mount the CD on UNIX systems,

1. Place the CD in the CD drive.

Most UNIX systems will automatically mount the CD. If the CD does not mount, see [Installing Synopsys Tools](#)

2. To invoke the installer, enter

```
% /cdrom/setup
```

or

```
% cd your_cd_path; ./setup
```

3. Continue with the steps in “[Running the Installation Program](#),” next.

To mount the CD on Windows systems,

1. Place the CD in the CD drive.

The installation program should start automatically. If it does not, double-click the setup.exe executable file, located at the root level of the CD. For example,

```
D:\setup.exe #Where D is your CD drive.
```

2. Continue with the steps in “[Running the Installation Program](#),” next.

Running the Installation Program

Make certain that any open applications are closed before proceeding with the installation.

When the installation program begins, the Welcome screen appears. Answer the installation prompts and click Next to continue. If scroll bars appear in the panel, scroll to make sure you have reviewed all available information.

Only the path destination screen, which requires more explanation, is shown. (Note that selections shown in this screen are for demonstration purposes only and might not reflect the current product version.)

1. Read the Welcome Screen.
2. In the Installation Type window, select the type of installation you want to perform.

UNIX: Select a Typical or Custom installation.

Windows: Select a Typical or Custom installation, or select a Network installation to establish network access from a client machine to previously installed products on a remote machine.

3. If you selected a Typical or Custom installation, enter a directory name that does not include spaces in the Destination box. You can also use the Browse button to select a directory.

Installing CosmosScope

Installing the Software (UNIX and Windows)

4. (Windows only) If you have chosen to perform a network installation, create a network mapped drive to a remote machine on which the CosmosScope software was previously installed. If not, skip to step 6.

5. (Windows only) Set up network access to a remote machine.

The Network installation option allows you to link to applications previously installed on other Windows machines. It is assumed that a stand-alone CosmosScope installation has already been performed on another machine.

- Enter the source path by using the previously created mapped drive, which resolves to the location where the ai_bin directory is located. For example,

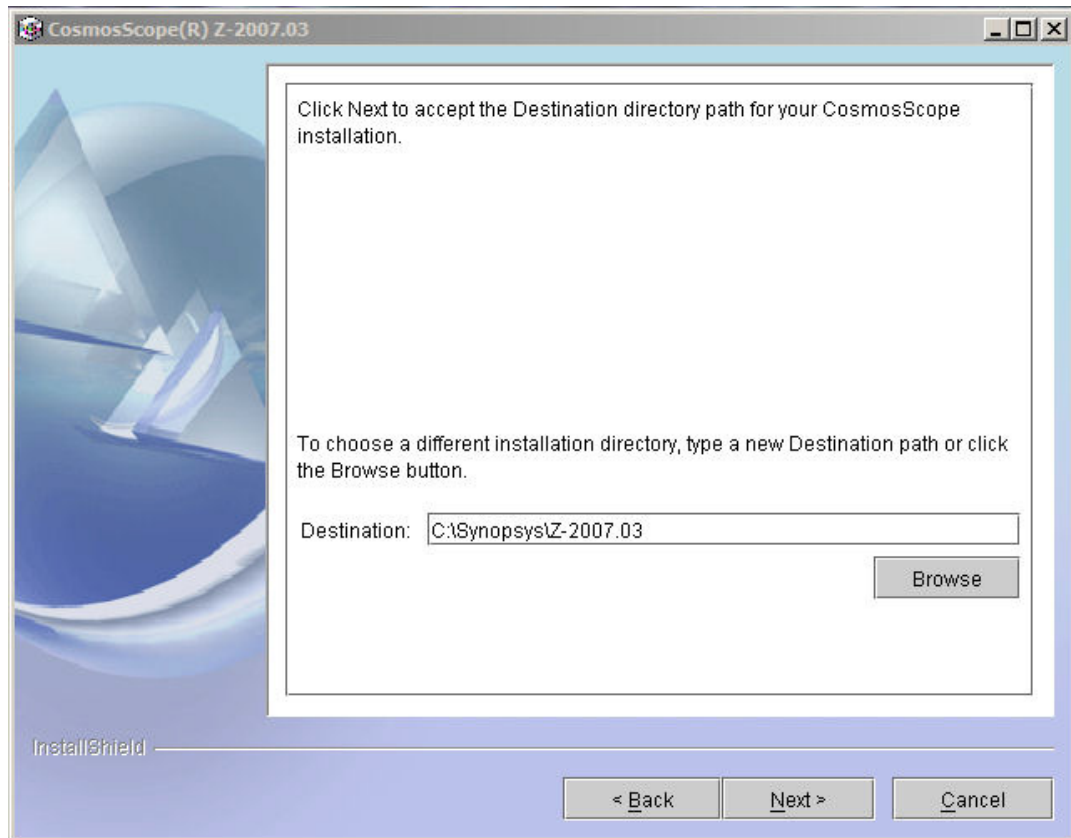
S:\Synopsys\Z-2007.03

where S: is your network mapped drive.

- Enter a destination path name to a location on the local host machine where a minimal set of files will be installed. In the Browse window, navigate to the directory you want, for example, Z-2007.03. Select this directory and click the Open button. The path to the Z-2007.03 directory is inserted in the Destination box.

Installing CosmosScope

Installing the Software (UNIX and Windows)



6. Wait while the disk space is being verified.

You will see a screen that asks you to wait while the disk space is being verified. Then the summary information screen appears. This screen summarizes the selections you have made and the disk space requirements.

7. Wait while the products are installed.

While files are being copied, you can track the Installation progress in the progress bar. When the bar shows a 100 percent progress, you must wait while the uninstall program is created. The final installation status is then displayed, with the message that the tool has finished installing.

If errors are displayed in the final installation status, see the install log for details.

Click Finish to exit the installation program.

Invoking CosmosScope on Windows

To invoke CosmosScope on Windows platforms,

1. Check that your `SNPSLMD_LICENSE_FILE`, `LM_LICENSE_FILE`, or another tool-specific license variable is set to a valid licensing server. If licenses are not available, CosmosScope will fail when invoked. For detailed instructions on setting the license variable, see [Installing Synopsys Tools](#).

The port and host name variables correspond to the TCP port and license server host name specified in the `SERVER` line of the Synopsys license file.

Each license file can contain licenses for many packages from multiple vendors. You can specify multiple license files by separating each entry with a colon (:) for UNIX or a semicolon (;) for Windows.

2. Start the tool by choosing Start > Programs > Synopsys > *product version* > CosmosScope.

The CosmosScope window opens.

3. To check the product version, choose Help > About CosmosScope, and in the window that opens, click Copyright/Legal.
4. To exit CosmosScope, choose File > Exit.

Setting Up the User Environment on UNIX

To set up the user environment, you must specify the location of the executable files and set the license environment variable.

The directory containing the executable commands is located within the `ai_bin` directory in the `install_home` installation root.

Specifying the Executable File Location

To set up a new CosmosScope user, add the executable file to the path.

- If you are using the C shell, add the following line to the `.cshrc` file:

```
set path=(install_home/ai_bin $path)
```
- If you are using the Bourne, Korn, or Bash shell, add the following line to the `.profile`, `.kshrc`, or `.bashrc` file:

```
PATH=install_home/ai_bin: $PATH
export $PATH
```

Setting the SNPSLMD_LICENSE_FILE or LM_LICENSE_FILE Environment Variables

You must install the SCL software and define the SNPSLMD_LICENSE_FILE, LM_LICENSE_FILE, or another tool-specific variable before you can verify the CosmosScope installation.

For information about downloading and installing SCL and on setting the license variable, see [Installing Synopsys Tools](#).

Verifying the CosmosScope Installation on UNIX

To verify the installation of the CosmosScope tools,

1. Make sure you are in a directory where you have read/write privileges.

```
% cd $HOME
```

2. Invoke the tool by entering

```
% cscope &
```

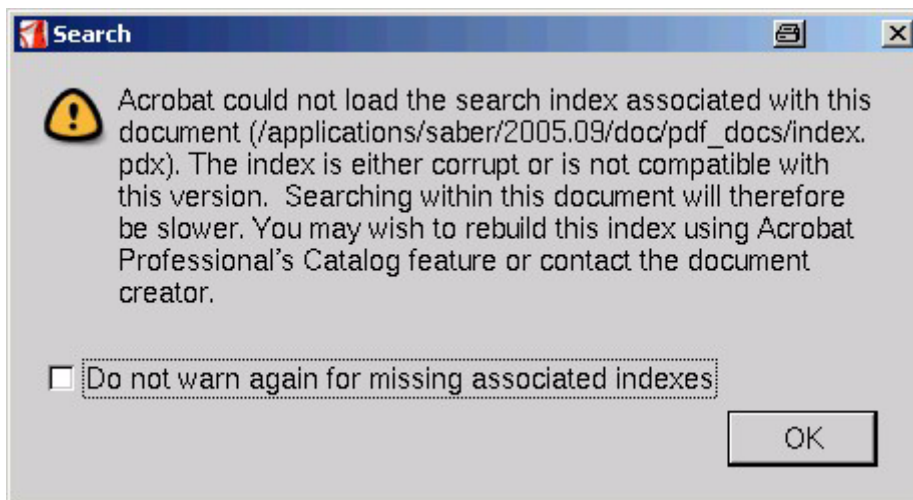
If the CosmosScope tools are correctly installed, this command invokes CosmosScope, displays the CosmosScope welcome screen, then opens the tool.

Viewing and Printing CosmosScope Documentation in Portable Document Format

To view and print CosmosScope documentation in Portable Document Format (PDF), you must have Adobe Acrobat Reader installed on your machine. To determine which version of Adobe your operating system requires, see [Table 5 on page 15](#).

Adobe Reader Full-Text Search Issue on UNIX

When you do a full-text search of CosmosScope documentation on UNIX operating systems, you might see the following error message:



The file mentioned in the message, `index.pdx`, is a full-text search index that lets you search a collection of manuals shipped with your release. This message appears when your version of Adobe Reader cannot use the version of the full-text search index provided.

You can use CosmosScope documentation without the full-text search feature. All other features, including searches within a single document, still work. The only task you will not be able to do is to search more than one document in the collection.

Table 5 shows which version of Adobe Reader you need to use with a particular release. It also indicates whether full-text search is available for a particular platform and release.

Table 5 Platform and Supported Version

Platform	Product documentation version	Full-text search available	Adobe Reader version
HP-UX	Y-2006.03, Y-2006.06 or later	No	Adobe Reader 5.0 or earlier
	X-2005.12 or earlier	Yes	Adobe Reader 5.0 or earlier
IBM RS/6000 (AIX)	Y-2006.03, Y-2006.06 or later	No	Adobe Reader 5.0 or earlier
	X-2005.12 or earlier	Yes	Adobe Reader 5.0 or earlier
Linux	Y-2006.03, Y-2006.06 or later	Yes	Adobe Reader 7.0
	X-2005.12 or earlier	No	Any version
Sun SPARC (Solaris) ¹	Y-2006.03, Y-2006.06 or later	Yes	Adobe Reader 7.0
	X-2005.12 or earlier	Yes	Adobe Reader 5.0 or earlier
Windows	Y-2006.03, Y-2006.06 or later	Yes	Adobe Reader 6.0 or 7.0
	X-2005.12 or earlier	Yes	Any version

1. On Solaris operating systems, the GNOME desktop manager must be installed to support Adobe Reader 7.0.

For detailed information, see SolvNet article 017761, "An Error Message Appears When Doing a Full-text Search of Synopsys Product Documentation."

Using Command Options

You can install CosmosScope on UNIX platforms by using the `setup` script command and on Windows by invoking the `setup.exe` installation program. By default, the CosmosScope installer invokes the GUI installation program on all platforms. If you want to install the software in silent mode or in the background, use the `-silent` command-line option, which is supported on all platforms. If you do not use the `-silent` option at the command line, any option you enter is reflected in the GUI.

The following options are available from the command line. Unless otherwise indicated, they are available for both UNIX and Windows systems.

Usage: `setup [options]`

`-silent`

Suppresses all graphics output.

`-installdir destination directory`

Installs files to a destination directory. The path name cannot include spaces.

`-typical (default)`

Installs typical features.

`-license port host1 [host2 host3] [license file] (Windows only)`

Sets up licensing services on Windows platforms. If you specify a license file, the file must already exist and have an absolute path name. If you don't specify a license file, the default license file path name is used. You can change the default after installation.

The `SNPSLMD_LICENSE_FILE` or `LM_LICENSE_FILE` environment variable is set using the port and host information specified. If the `SNPSLMD_LICENSE_FILE` or `LM_LICENSE_FILE` environment variable already exists, only unique port and host information will be added.

Regardless of whether the `-license` option is used, the `lmgrd` and `avandt` daemons are always installed, so you can set up license services manually after installation.

To set up or modify a local Windows license server, use the Macrovision `LMTOOLS` utility, which you can access by choosing `Start > Programs > Synopsys > CosmosScope version > License Tool`.

To set or modify the `SNPSLMD_LICENSE_FILE` or `LM_LICENSE_FILE` environment variable, open the Control Panel and choose System > Environment (Windows NT) or System > Advanced > Environment Variables (Windows 2000 or later). You cannot use LMTOOLS to modify environment variables.

`-is:tempdir temporary directory`

Specify an alternative location in which to store temporary files. On UNIX platforms, the default temporary directory might not contain enough free space to install the tool, causing the installer to terminate abnormally.

Troubleshooting CosmosScope Startup on Windows

The HOME directory (`C:\Documents and Settings\username`) must exist. If it doesn't exist, when you launch CosmosScope on a Windows platform, you will see the following error message:

```
"Error evaluating -c supplied command"
can't create directory "username" no such file or directory
while executing
    "error $res"
...
```

If the directory exists, but this message still appears, you must explicitly set the HOME variable.

To set the variable,

1. Choose Start > Settings > Control Panel > System > Advanced > Environment Variables.
2. In the Environment Variable dialog box under "System variables," click New.
3. In the "Variable name" box, enter HOME. In the "Variable value" box, enter the path. For example,

```
C:\Documents and Settings\username
```

Replace *username* with your name.

Uninstalling the Software

If license servers are running or the product was recently invoked, stop the license server and any aimsh processes. If these processes are not stopped before you uninstall the tool, the files might not be fully removed. If this occurs, manually delete any remaining files and delete the vpd.properties file located in the user's home directory (on Windows, in C:\Windows).

When you are using the uninstall program from the command line, the `-silent` option is also available. The `-silent` option suppresses all graphics output.

To uninstall the software on UNIX,

- Execute the uninstall program, which is located in the `Install_home/_CosmosScope` directory, or delete the entire software directory.
If you delete the directory, you must also delete the vpd.properties file located in your home directory.

To uninstall the software on Windows,

- From the Control Panel, select Add/remove programs.
or
- Choose Start > Programs > Synopsys > CosmosScope *version* > Uninstall.
The uninstall program will automatically start.
or
- Execute the uninstall program located in the `Install_home_CosmosScope` directory. For example,

```
c:> install_home\_CosmosScope\uninstall
```

The uninstall program will start.

Customer Support

For information about accessing customer support, see [Installing Synopsys Tools](#).