

# **Saber View Installation Guide**

---

Version D-2010.03, March 2010

Saber is a registered trademark of Sabremark Limited partnership and is used under license.

**SYNOPSIS®**

# Copyright Notice and Proprietary Information

Copyright © 2010 Synopsys, Inc. All rights reserved. This software and documentation contain confidential and proprietary information that is the property of Synopsys, Inc. The software and documentation are furnished under a license agreement and may be used or copied only in accordance with the terms of the license agreement. No part of the software and documentation may be reproduced, transmitted, or translated, in any form or by any means, electronic, mechanical, manual, optical, or otherwise, without prior written permission of Synopsys, Inc., or as expressly provided by the license agreement.

## Right to Copy Documentation

The license agreement with Synopsys permits licensee to make copies of the documentation for its internal use only. Each copy shall include all copyrights, trademarks, service marks, and proprietary rights notices, if any. Licensee must assign sequential numbers to all copies. These copies shall contain the following legend on the cover page:

“This document is duplicated with the permission of Synopsys, Inc., for the exclusive use of \_\_\_\_\_ and its employees. This is copy number \_\_\_\_\_.”

## Destination Control Statement

All technical data contained in this publication is subject to the export control laws of the United States of America. Disclosure to nationals of other countries contrary to United States law is prohibited. It is the reader's responsibility to determine the applicable regulations and to comply with them.

## Disclaimer

SYNOPSYS, INC., AND ITS LICENSORS MAKE NO WARRANTY OF ANY KIND, EXPRESS OR IMPLIED, WITH REGARD TO THIS MATERIAL, INCLUDING, BUT NOT LIMITED TO, THE IMPLIED WARRANTIES OF MERCHANTABILITY AND FITNESS FOR A PARTICULAR PURPOSE.

## Registered Trademarks (®)

Synopsys, AMPS, Astro, Behavior Extracting Synthesis Technology, Cadabra, CATS, Certify, CHIPit, Design Compiler, DesignWare, Formality, HDL Analyst, HSIM, HSPICE, Identify, Leda, MAST, ModelTools, NanoSim, OpenVera, PathMill, Physical Compiler, PrimeTime, SCOPE, Simply Better Results, SiVL, SNUG, SolvNet, Syndicated, Synplicity, the Synplicity logo, Synplify, Synplify Pro, Synthesis Constraints Optimization Environment, TetraMAX, UMRBus, VCS, Vera, and YIELDirector are registered trademarks of Synopsys, Inc.

## Trademarks (™)

AFGen, Apollo, Astro-Rail, Astro-Xtalk, Aurora, AvanWaves, BEST, Columbia, Columbia-CE, Confirma, Cosmos, CosmosLE, CosmosScope, CRITIC, CustomExplorer, CustomSim, DC Expert, DC Professional, DC Ultra, Design Analyzer, Design Vision, DesignerHDL, DesignPower, DFTMAX, Direct Silicon Access, Discovery, Eclipse, Encore, EPIC, Galaxy, Galaxy Custom Designer, HANEX, HAPS, HapsTrak, HDL Compiler, Hercules, Hierarchical Optimization Technology, High-performance ASIC Prototyping System, HSIM<sup>plus</sup>, i-Virtual Stepper, IICE, in-Sync, iN-Tandem, Jupiter, Jupiter-DP, JupiterXT, JupiterXT-ASIC, Liberty, Libra-Passport, Library Compiler, Magellan, Mars, Mars-Rail, Mars-Xtalk, Milkyway, ModelSource, Module Compiler, MultiPoint, Physical Analyst, Planet, Planet-PL, Polaris, Power Compiler, Raphael, Saturn, Scirocco, Scirocco-i, Star-RCXT, Star-SimXT, StarRC, System Compiler, System Designer, Taurus, TotalRecall, TSUPREM-4, VCS Express, VCSi, VHDL Compiler, VirSim, and VMC are trademarks of Synopsys, Inc.

## Service Marks (sm)

MAP-in, SVP Café, and TAP-in are service marks of Synopsys, Inc.

SystemC is a trademark of the Open SystemC Initiative and is used under license.

ARM and AMBA are registered trademarks of ARM Limited.

Saber is a registered trademark of SabreMark Limited Partnership and is used under license.

All other product or company names may be trademarks of their respective owners.

# Contents

---

---

<b>Installing Saber View</b> .....	1
Installing the Software .....	1
Verifying the Installation .....	2
Uninstalling Saber View .....	4

## Contents

# Installing Saber View

---

*This document contains specific information to prepare for and verify installation of Saber View.*

Install the latest version of Saber in a folder that does not contain an existing installation. A common license can serve multiple versions of Saber.

**Note:** The installation instructions in this document are the most up-to-date available at the time of production. However, changes might have occurred. For the latest installation information, see Saber release notes or documentation on [SolvNet](#).

This section covers the following topics:

- [Installing the Software](#)
- [Verifying the Installation](#)
- [Uninstalling Saber View](#)

---

## Installing the Software

Ensure to close any open Saber applications before proceeding with the installation.

To install Saber View:

1. Download the Saber release to a temporary directory. You can obtain the latest Saber download instructions from the Release Library, which is accessible through SolvNet.
2. Select the Saber Harness option for installation while installing Saber in addition to other typical Saber components.

**Chapter :**  
Verifying the Installation

For the latest installation information, see the Saber Installation Guide at:  
<http://www.synopsys.com/Support/LI/Installation/Pages/default.aspx>.

**Note:** C:\Synopsys\Saber\*<version>* is the default install location unless you choose a different location.

3. Extract the contents of `v2009.2.4.1.zip` available from the location `<Saber_Install_path>\Synopsys\Saber\<version>\Saber\saberview\` to a temporary location.
4. Navigate to the `<Temporary_Location>\v2009.2.4.1\` folder and double-click `install.bat`.

The Saber View installer performs the following tasks:

- Creates a program installation directory, `C:\Program Files\TTA\Netlist` unless you choose a different location.
- Creates the following icons on the desktop:
- License Control: Launches licenses utility (Admin use only)
- WebUI: Web-Based NetList Converter Application (Admin use only)
- Netlist: Launches the SaberView rendering application (Users)

---

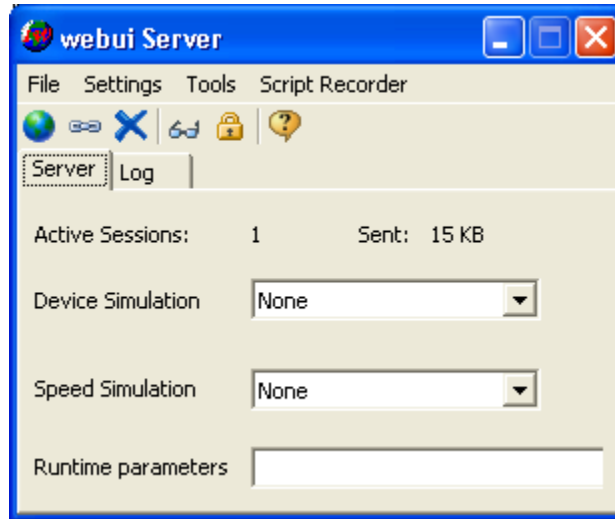
## Verifying the Installation


Saber View requires only a single license daemon, `snpslmd`. For additional information, see [Installing Synopsys Tools](#).

To run Saber View View:

1. Check that your `SNPSLMD_LICENSE_FILE` or `LM_LICENSE_FILE` variable is set to a valid licensing server. If you do not have a license, contact Customer Support to obtain one.

2. Either double-click the WebUI shortcut icon from the desktop or double-click <SaberView\_Install\_Path>\TTA\Netlist\WebUI.exe. The Saber View window is displayed:



3. To launch Saber View, either click File > Execute or click  from the webui Server toolbar. The Saber View login page is displayed:



4. Enter the login credentials supplied by the Synopsys Technical Support to start using Saber View.

If you do not have a valid login credentials, contact Customer Support.

## **Uninstalling Saber View**

To uninstall the software, select and delete the Saber View installation folder (C:\Program Files\TTA\).